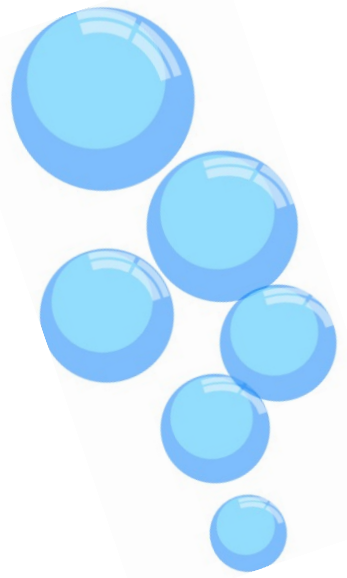




Spelling Words for the Week of: November 28th



Unit 19 Final le

- | | | | |
|------------|------------|-------------|------------|
| 1. bottle | 2. pebble | 3. single | 4. jumble |
| 5. tickle | 6. rattle | 7. middle | 8. bubble |
| 9. sample | 10. cattle | 11. snuggle | 12. kettle |
| 13. jungle | 14. ankle | 15. giggle | 16. simple |
| 17. settle | 18. temple | 19. battle | 20. mumble |

Challenge Words

- | | | |
|--------------|--------------|-------------|
| 1. incessant | 2. associate | 3. terrific |
| 4. radiant | 5. quotation | |

One challenge word is required.

