

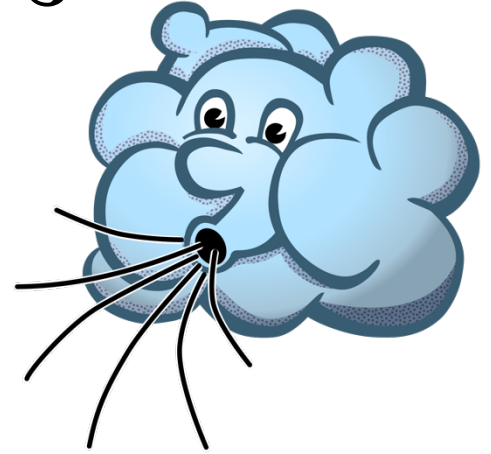


SPELLING WORDS

For the Week of:

November 6-9

The test will be Thursday,
November 9th this week

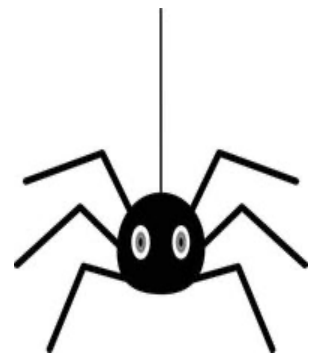


Spelling Focus: Long e: ea, ee, ie

- | | | | |
|-------------|-----------|------------|------------|
| 1. field | 2. lead | 3. speed | 4. believe |
| 5. deal | 6. piece | 7. reach | 8. breeze |
| 9. speak | 10. agree | 11. least | 12. season |
| 13. between | 14. chief | 15. steam | 16. degree |
| 17. reason | 18. brief | 19. repeat | 20. peach |

Challenge Words

- | | |
|----------------|-------------------|
| 1. stealthily | 2. Gulf of Mexico |
| 3. salutations | 4. arachnid |



Challenge Words are Optional this week